

Heritage Landing

Western Waterfront District *Nims and Nelson Neighborhoods*

Usefulness

- Shore fishing available with nearby parking
- Scenic views of Muskegon Lake
- Lakeshore Trail (bike path) access
- Vehicle access and parking near shoreline
- Picnicking
- Playgrounds

Needs, Concerns, Recommendations

- Closed to the public too often due to festivals and cruise ships
- Separate festival zone for public access
- Bathroom not open
- Kayak access points need improvements
- Improve water quality at Rotary Park bay
- Festival fencing blocks views of shoreline gardens
- Environmental conditions –foundry fill and erosion
- Litter outreach needed (throughout city)

Rotary Park (at Heritage Landing)

- Kayak launch too far from parking (launch removed)
- Water quality needs improvement at storm outfall bay

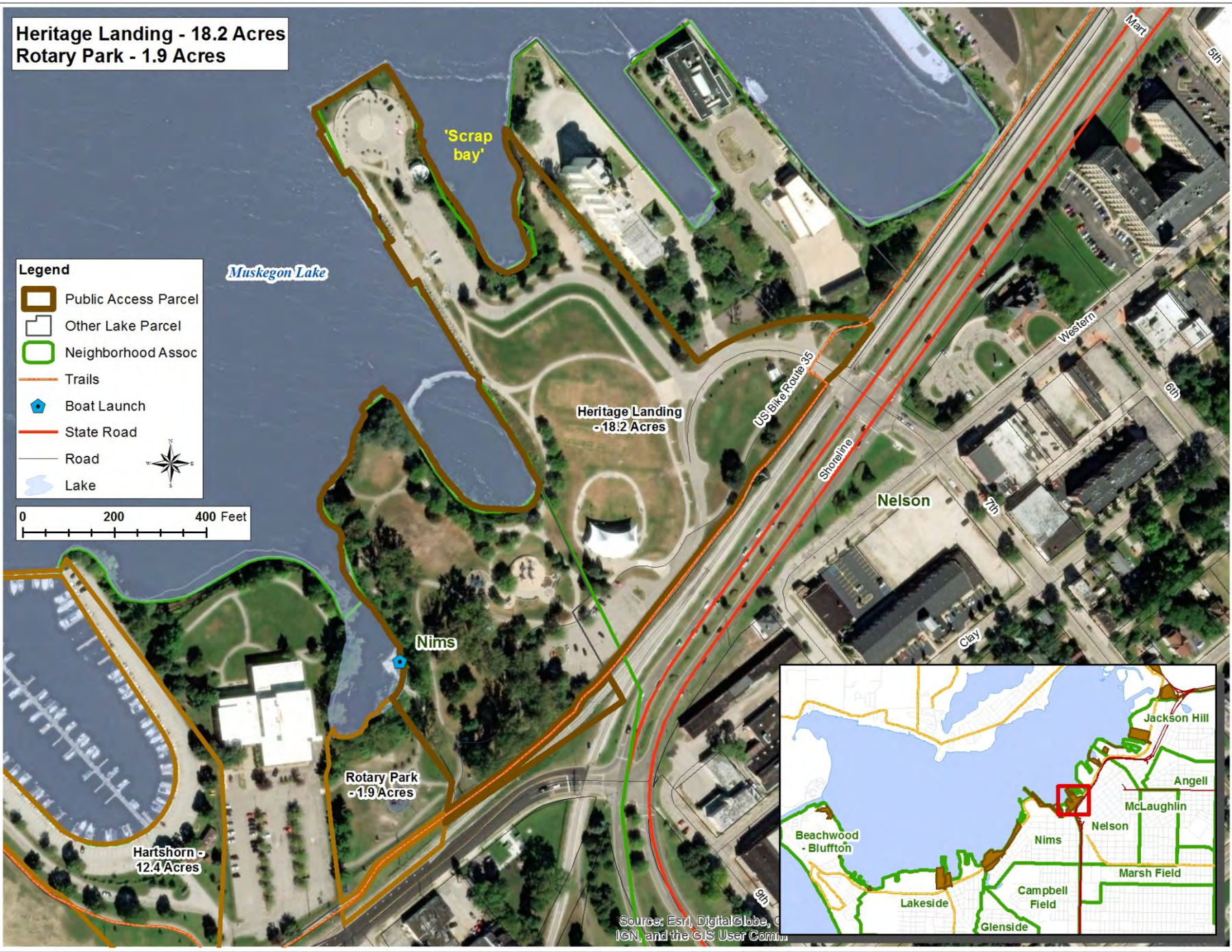


Heritage Landing - 18.2 Acres
Rotary Park - 1.9 Acres

- Legend**
- Public Access Parcel
 - Other Lake Parcel
 - Neighborhood Assoc
 - Trails
 - Boat Launch
 - State Road
 - Road
 - Lake



0 200 400 Feet



Source: Esri, DigitalGlobe, IGN, and the GIS User Community