

# Jay Cee Launch / Cottage Grove

## Recreational Usefulness

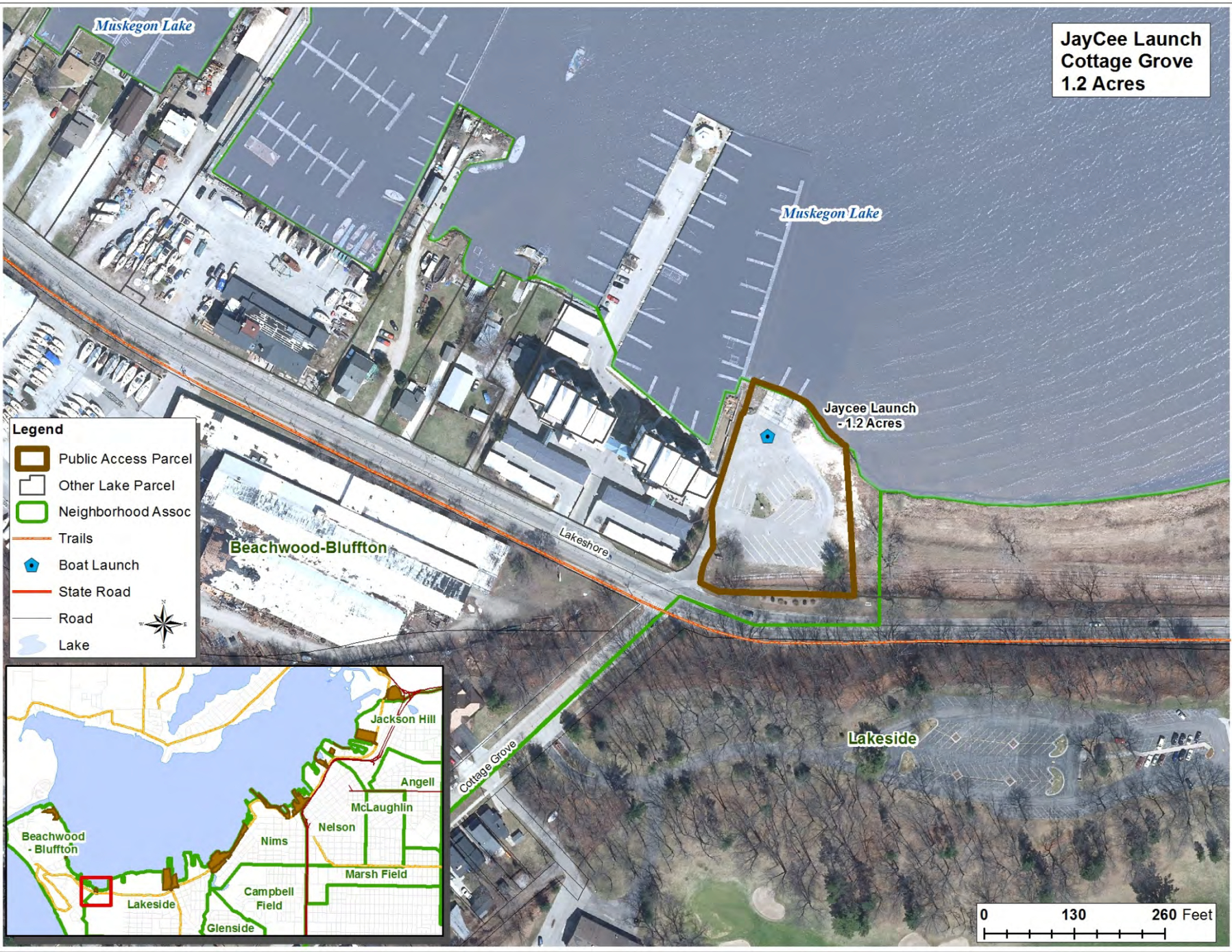
- Provides access within a long stretch of privately-owned shoreline
- Scenic view of Muskegon Lake
- Motorized launch
- Used for ice fishing
- Used for ice boating
- Adjacent to shallow, wade-able waters (pan fishing, swimming, kayak access)
- Fishing and recreational access from shore
- Porta Jon available

## Needs, Concerns, Recommendations

- Parking restricted to motorized boat launching
  - Some parking available nearby on road
- Bike Path should go here



JayCee Launch  
Cottage Grove  
1.2 Acres



**Legend**

- Public Access Parcel
- Other Lake Parcel
- Neighborhood Assoc
- Trails
- Boat Launch
- State Road
- Road
- Lake

